

3/27/2019 10:02:57 AM

DWG A9.1.2

FIRST FLOOR REFLECTED CEILING PLAN - AREA A

1/8" = 1'-0"



REFLECTED CEILING PLAN LEGEND

APPLIES TO DRAWINGS A9.1.1 - A9.2.2

REFER TO M, E & FP DRAWINGS FOR REFLECTED CEILING PLAN SYMBOLS NOT INDICATED BELOW

- SPACE NUMBER  
CEILING HEIGHT, AFF UNO
- INTERIOR APPLICATIONS: GYPSUM BOARD CEILING  
EXTERIOR APPLICATIONS: GYPSUM SOFFIT BOARD OR GYPSUM SHEATHING
- 2'-0" x 2'-0" LAY-IN ACOUSTICAL CEILING PANELS IN SUSPENDED GRID
- WITH OPENING  
WITH OPENING  
WITH OPENING  
WITH OPENING
- EXTERIOR WALL  
INTERIOR WALL/PARTITION TO UNDERSIDE OF DECK  
INTERIOR WALL/PARTITION TO CAP ABOVE OR TERMINATES ADJACENT TO A RATED HORIZONTAL ASSEMBLY  
INTERIOR WALL/PARTITION 4" MIN ABOVE HIGHEST ADJACENT CEILING. IF NECESSARY TO ACHIEVE RESULTS DESIRED, EXTEND WALL HEIGHT SO WALL BRACING IS NOT EXPOSED TO VIEW IN FINISHED SPACES  
INTERIOR WALL/PARTITION TO UNDERSIDE OF CEILING  
EXISTING TO REMAIN, VERIFY VERTICAL EXTENTS WHERE THE HEIGHT IMPACTS THE WORK

REFLECTED CEILING PLAN/DETAIL GENERAL NOTES

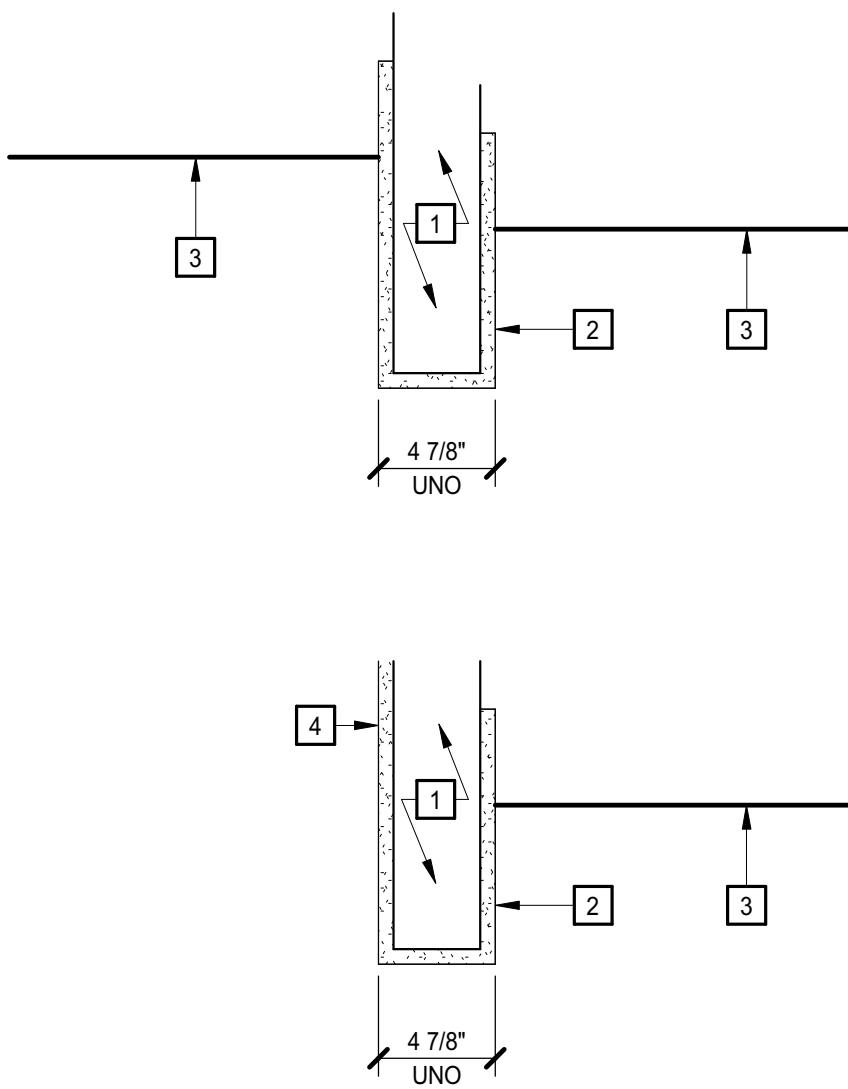
- A. ALL CEILING HEIGHTS SHALL BE 10'-0" AFF UNLESS INDICATED OTHERWISE.
- B. DRAWINGS INDICATE GRID LAYOUT DIAGRAMMATICALLY. REFER TO SPECIFICATIONS FOR SPECIFIC GRID LAYOUT CRITERIA AT PERIMETER CONDITIONS THAT MAY DIFFER FROM GRID LAYOUT INDICATED ON DRAWINGS.
- C. CENTER CEILING MOUNTED ITEMS WITHIN CEILING PANELS, UNLESS INDICATED OTHERWISE.
- D. IF ADDITIONAL SPRINKLER HEADS ARE REQUIRED TO SATISFY CODE OR COVERAGE DENSITIES (OTHER THAN THOSE THAT MAY BE INDICATED), PROVIDE ADDITIONAL SPRINKLER HEADS AT NO ADDITIONAL COST AND OBTAIN APPROVAL OF ARCHITECT FOR LOCATION OF SUCH HEADS, IF ANY.

REFLECTED CEILING PLAN KEYNOTES

REPRESENTED BY [n]

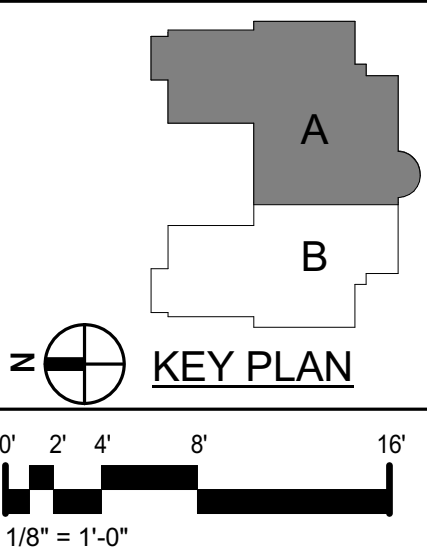
APPLIES TO DRAWINGS A9.1.1 - A9.2.2

- 1 CFSF-S
- 2 5/8" GYP BD, TERMINATE 4" ABV FIN CLG
- 3 FIN CLG: FINISH AND/OR HEIGHT AFF VARIES
- 4 GYP BD: EXTEND FULL HEIGHT, UNLESS INDICATED OTHERWISE
- 5 1-HOUR FIRE RESISTANCE RATED HORIZONTAL ASSEMBLY, ABOVE ACP



BULKHEAD DETAILS

NO SCALE



Dobo Hall Renovation - Package A

SCO PROJECT NO. 18-19798-01A

UNC Wilmington

4978 CAHILL DR, WILMINGTON, NC 28403

PROJECT NO. 580999 DATE: MARCH 27, 2019

REVISIONS

DATE DESCRIPTION

REFLECTED  
CEILING PLAN -  
FIRST FLOOR PLAN  
AREA A

A9.1.1

PROGRESS  
PRINT NOT FOR  
CONSTRUCTION

52282

MOSELEYARCHITECTS

911 N. WEST STREET, SUITE 205 RALEIGH, NORTH CAROLINA 27603  
PHONE (919) 845-0691  
MOSELEYARCHITECTS.COM